



Reg No: 2013/220412/07
CSD No: MAAA0276626
Eskom Vendor No: 001-108-2083



COMPANY PROFILE

1. Introduction.

PISCO (PTY) LTD is a private company with no limitation in dealership. The company was established in 2013 to render various services and supply various products to the Mining industry, Eskom Power Stations, and Public And Private companies in South Africa

We are committed to preserving the environment and to take care of the health and safety of all persons that may be directly or indirectly affected by our activities.

2. Our Vision Statement

To be the company of choice to our clients and partners while continuing to minimize our carbon footprint and adding value to our partners and the nation in general

3. Our Track record

PISCO worked with a multitude of private and public partners

- * **Pegasuse**
- * **Basic Blue Engineering**
- * **Mmakgoge Group**
- * **Rula Bulk**
- * **Eskom**
 - i. **Matimba Power Station**
 - ii. **Tutuka Power Station**
 - iii. **Duvha Power Station**
 - iv. **Camden Power Station**
 - v. **Hendrina Power Station**
 - vi. **Kendal Power Staion**
 - vii. **Medupi Power Station**

As plant safety regulations specialists, who have performed various plant repairs and have supplied various products. we are looking forward to working with all **Eskom Power Stations** and its major **Contractors**. Our main target is to ensure that all our clients comply with the plant safety regulations as set by **Eskom**.

We are also optimistic that our future clients will also be satisfied by our work and our mutually beneficial partnership with them.

4. Our Values.

We are **SMAT**:

Setting goals that are **(Simple, Measurable, Achievability and Time bound)** as we are honest and will treat our clients with integrity.



4 . Our Services

Services

- * PSR and ORHV AUTHORISATIONS(RP,AO and AS under Eskom)
- * CONVEYOR MAINTENANCE
- * ASH PLANT and DHP MAINTENANCE
- * CONDITION MONITORING
- * CLEANING

SUPPLY

- * IDLERS
- * IDLERS FRAME
- * BEARINGS
- * MOTORS
- * COUPLING
- * ALL CONVEYOR ELECTRICAL COMPONENTS
(circuit breaker, relays, speed switch, trip wire, light...)
- * PUMP
- * VALVES
- * PIPES

CLEANING

- * CONVEYOR BELT CLEANING
- * SPILLAGE CLEANING
- * CHUTE CLEANING & UNBLOCKING
- * DUCT CLEANING
- * VACUUM CLEANING
- * OFFICE CLEANING
- * INDUSTRIAL CLEANING
- * CORPORATE CLEANING

As a supplier and a service provider we deliver only quality based production and ensure as far as is reasonably practicable that it is done in a satisfactory and accord to our customer's needs and expectation.

One of our policies is clear when it comes to customer service. We deliver on agreed time and quality of product. We are aware that our client is our most valuable partner in all our business ventures. Through our clients' regular audits and inspections we inspire to evaluate and improve all our services and products.

The directorate of the company takes the lead in follow ups and regular visits in the interest of defining, establishing and refining our clients comfort in terms of our service and products.

5 . PSR and ORHV(RP, AO and AS)

Throughout our short existence as a company, we have specialized with Eskom regulations and lock out system and procedures. Our aim is to cover as many plants as possible to allow our client freedom to expand their operations to whatever plant they so see fit.

We striving as a company to be all plant authorized throughout Eskom Generations or any Eskom division we manage to get a foot print.



6 .CONVEYOR BELT SERVICES

As a company, we have spent most of our time in coal conveyor plant, assisting and learning from companies like RULA, BASIC BLUE ENGINEERING and PEGASUS and performed following works:

- Belt Splicing(Hot and Cold)
- Mechanical work (gearbox replacement, bearing changing, welding, pulley replacement, scrapper installation and maintenance, idler changing...)
- Electrical work(relay replacement, motor changing, cable pulling and splicing, trip wire maintenance)
- Pulley Legging
- Conditioning monitoring (full plant inspection, laser alignment, balancing, vibration analysis...)
- We also do cleaning as part of house keeping

7 .ASH PLANT and DHP

We have assisted big companies like RULA, MMAKGOGEGROUP over the years and in the process gaining vital experience in: **DHP and ASH PLANT refurbishment.**

- Pipe Work
- Valve and Pumps Replacement
- Conditioner Refurbishment
- HP cleaning
- Ash Bunker Refurbishment
- Ash Bunker vacuuming

8 . Health and safety

The company's directive is guided by the legislation which prioritizes in the health and safety of all our employees as well as persons who may be affected by our business.

Notwithstanding our responsibilities in terms of the OHS Act, MHS Act and other laws, we also aim to become the first choice partner to our clients in achieving the best realization of zero harm to persons, plant environment and energy.

The company is built on a profound foundation strengthened with policies and procedures for the day to day proper operation of our activities.

9. Liability

We are also challenged by compliance with other legal statutes that governs our company's moral and conduct. It is through prompt acknowledgement and appreciation of this laws that we remain on the right track.

10. Production

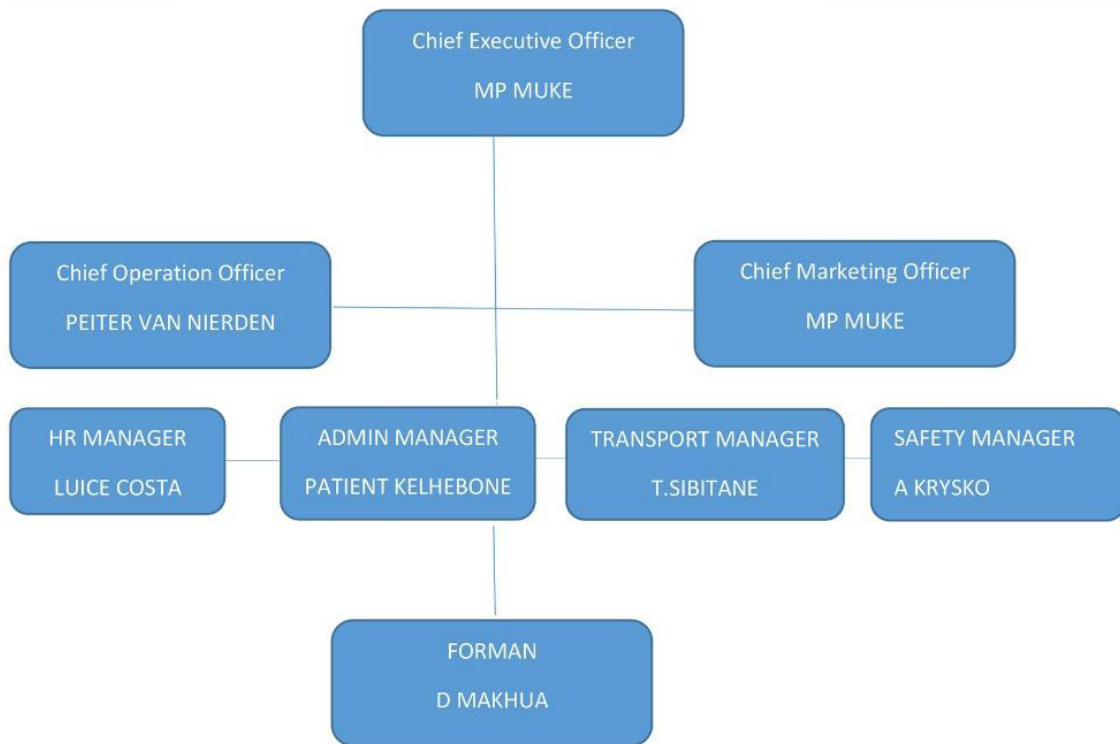
Any successful business is driven by shared dedication and hard working we are also measured by the output of quality products and by our KPI's systems.

11. Marketing

Our targets will be focused on potential clients in need of our services. We are readily available to big projects, tenders and other long term businesses as we have a professional Marketing team set and ready to meet and reach out to all potential Clients.



12 .Company Organogram



13 Projects

- a. Mmakgoge group: we subcontracted under Mmakgoge group at Matimba, kriel and hendrina powerstation on different project and plant.
Project manager: Gomutso 0127558935, 0827056388
Duration: 2016 to 2019
- b. Duvha Power Station
Full Conveyor maintenance (Splicing, Pulley leggin...)
Project Manager: Lucky Mtembu 0136900186/0823254570
Duration: from 2018 to 2020.
- c. Kendal Power Station
 - Primary Air heater Tube replacement.
Project Manager: Patricia Modiba: 0136476305
Duration: 2016.
 - Water Treatment Acid and caustic Pipe line replacement
Project manager: Thabo Nare: 0136476305
Duration: 2016
 - Water Treatment Plant Sand filter full refurbishment

Project manager: Brenda skosana

Duration: 2016

d. Solotrade/ sky entreprise

All Ash conveyor Moving head Hydraulic replacement and Ash Spreader main Hydraulic replacement.

Project manager: Trishen Rambally 0136560004/ 0842720629

Duration: 2016 – 2017

e. Keaser compressor

Installation of Unit 1 to Unit 6 Air compressor at Kendal power station

Project Manager: Grant Austin 0119745002

Duration: 2016 – 2019

f. CVR Solution

- Sub-contracting in Exxaro Dorfortein mine, Exxaro forzando (Installation conveyor belt idler frame, bearing, and pulley, 300m conveyor stricture replacement and hot and cold splicing).

Project Manager: P van Heerden: 0713554856

Duration: 2019 to 2020.

- Canion Mine (belt splicing and Pulley leggin)

Duration: 2020

g. Eskom Rotek

Belt splicing, Scrapper maintenance, pulley leggin

Project manager: 0824370328

Duration: 2019 - 2020

Park Home Fabrication And Supply

Project Manager: 082 437 0328

2021





Reg No: 2013/220412/07
CSD No: MAAA0276626
Eskom Vendor No: 001-108-2083

ADDRESS

1 Rhodes Street
Shop No. 5
Bambino Centre
eMalahleni

CONTACT DETAILS

Tell: 076 0863 459
Cell: 076 0863 459
Fax: 086 551 7926
Email: kvandisie@pisco.co.za